

Replacement of detector:

There are two versions of distance cylinder for detector CP102B.

Old version:



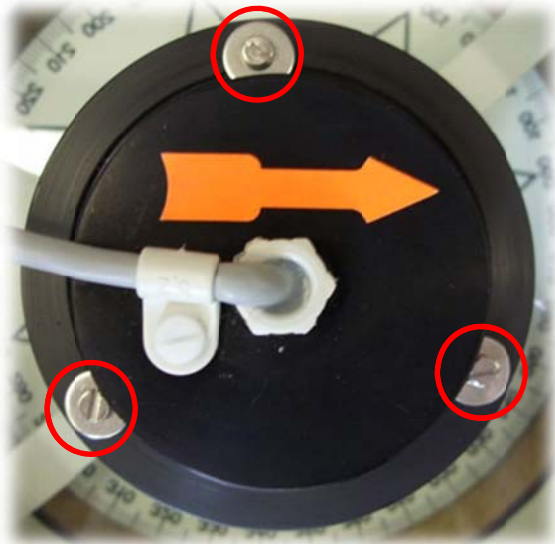
The old version will be replaced by new version during service of magnetic compass.

New version:



Disassembling of detector at cylinder old type:

- Switch off connected equipment.
- Unplug detector from junction box within compass binnacle
- Take out magnetic compass from compass binnacle.
- Turn around compass and place it upside down.
- Take care that compass is not laying on center-piece.



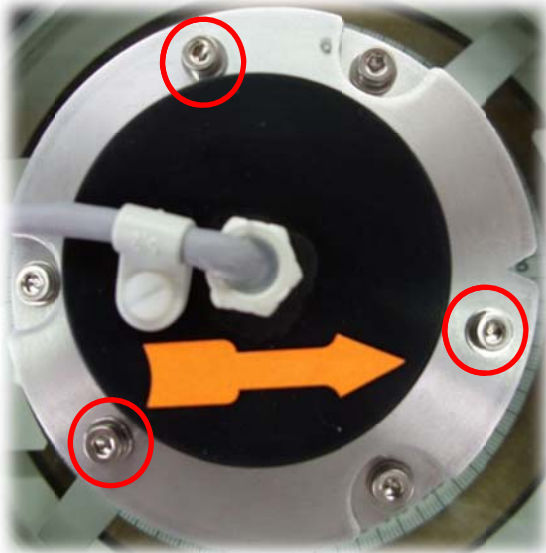
Remove the three marked screws.



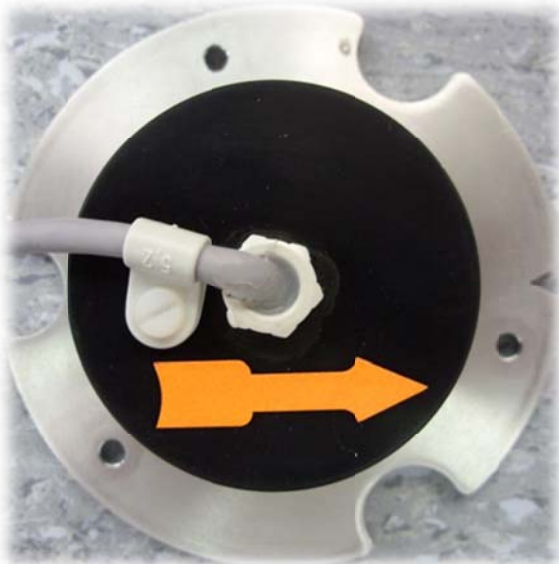
Detector can be removed from distance cylinder.

Disassembling of detector at cylinder new type:

- Switch off connected equipment.
- Unplug detector from junction box within compass binnacle.
- Take out magnetic compass from compass binnacle.
- Turn around compass and place it upside down.
- Take care that compass is not laying on center-piece.

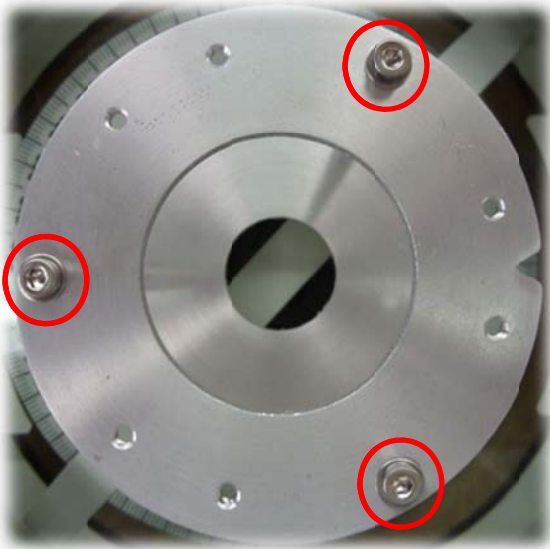


Remove the three marked screws.

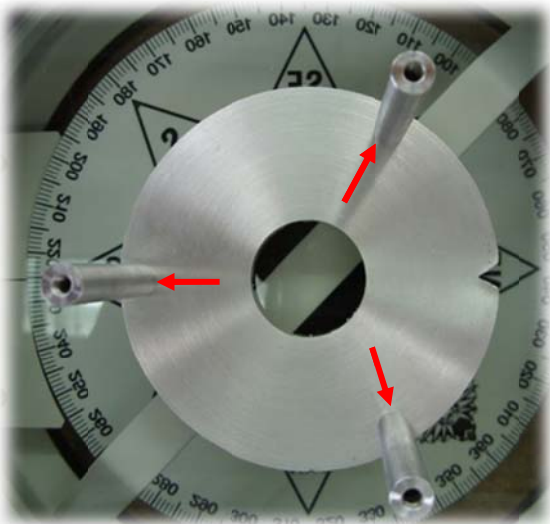


Detector can be removed from distance cylinder.

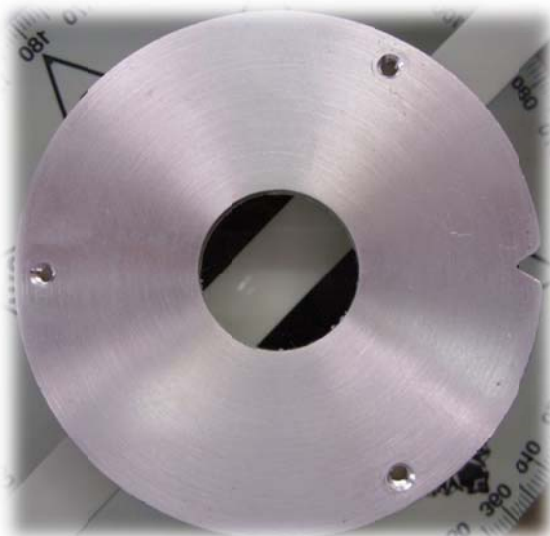
Alteration of distancecylinder from main- to reserve-compass:



Remove the three marked screws.



Remove the three bolts.



The ground plate will be left on compass.

Reassembling will be made in reverse order. The pieces of distance cylinder have a north marking to simplify assembling.

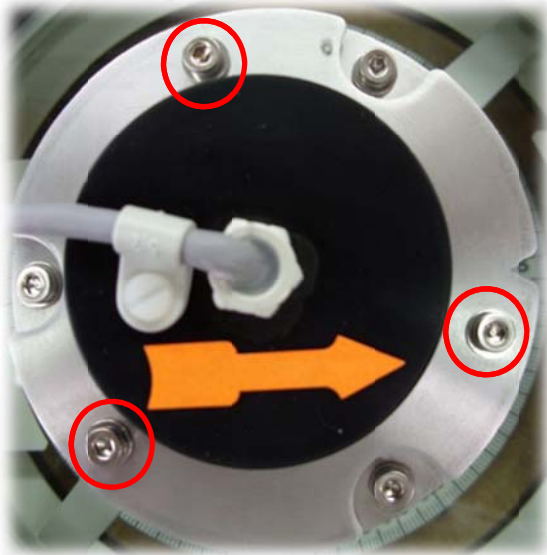


Take care that all markings are matching.



Adjusting of detector:

- Magnetic compass must be installed within compass binnacle first.



Loosen the three screws a little bit, so that detector can be turned within its fixation. Turn detector until readout at heading repeater matches readout at magnetic compass. Fasten the screws at that position.

After work is finished the readout of heading repeater and readout of magnetic compass have to be controlled within a full circle. If transmission errors are noticed, a calibration has to be done. For details of calibration refer to user manual of installed equipment.